

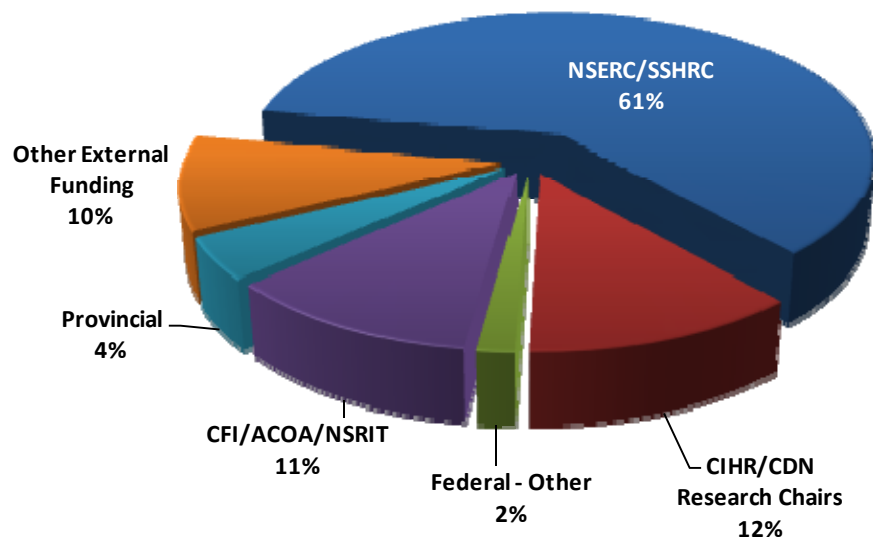
## Saint Mary's University Research Funding

The demands of our knowledge-based economy make the generation of new knowledge and the critical assessment of inherited assumptions matters of urgency. To this end, the University's Academic Plan is placing an even greater emphasis on research. Research funding is increasingly linked to community partnerships, and this trend converges strongly with Saint Mary's traditions of outreach and service. It is also recognized that a strong research culture is essential to faculty recruitment.

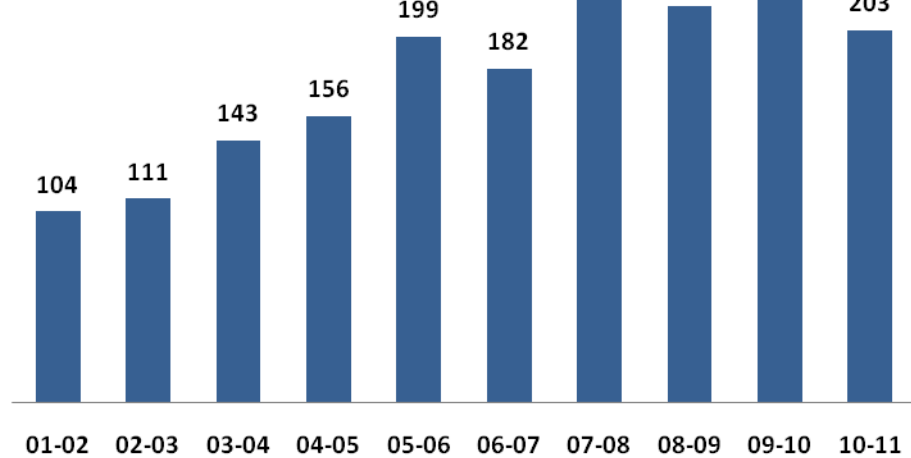
Revenue Source	2006-07	2007-08	2008-09	2009-10	2010-11
Federal Government					
NSERC	2,031,242	1,875,351	2,154,487	1,852,513	1,723,015
SSHRC	1,269,495	1,407,744	1,343,210	1,353,996	2,109,416
SSHRC Indirect Cost	764,728	923,624	1,126,174	1,210,597	1,260,574
CIHR	81,081	63,130	47,785	49,337	3,500
Canada Research Chairs	600,816	775,000	900,000	1,000,000	1,000,000
Federal - Other	286,399	573,567	476,576	324,968	132,747
CFI/NSRIT (incl. AceNet)	2,423,078	3,000,194	1,838,032	1,245,963	792,292
ACOA	972,824	848,822	711,767	200,785	144,354
<b>Total Federal Government</b>	<b>8,429,664</b>	<b>9,467,433</b>	<b>8,598,031</b>	<b>7,238,159</b>	<b>7,165,900</b>
Provincial Govt.	126,155	220,715	240,150	170,235	343,063
NSHRF	147,416	48,157	83,504	178,535	33,648
Other External Funding	562,339	762,714	548,106	817,710	837,110
<b>Total</b>	<b>9,265,574</b>	<b>10,499,019</b>	<b>9,469,791</b>	<b>8,404,639</b>	<b>8,379,720</b>

### Research Funding 2010-11

The majority (86%) of research funding at SMU is received from Federal government sources.



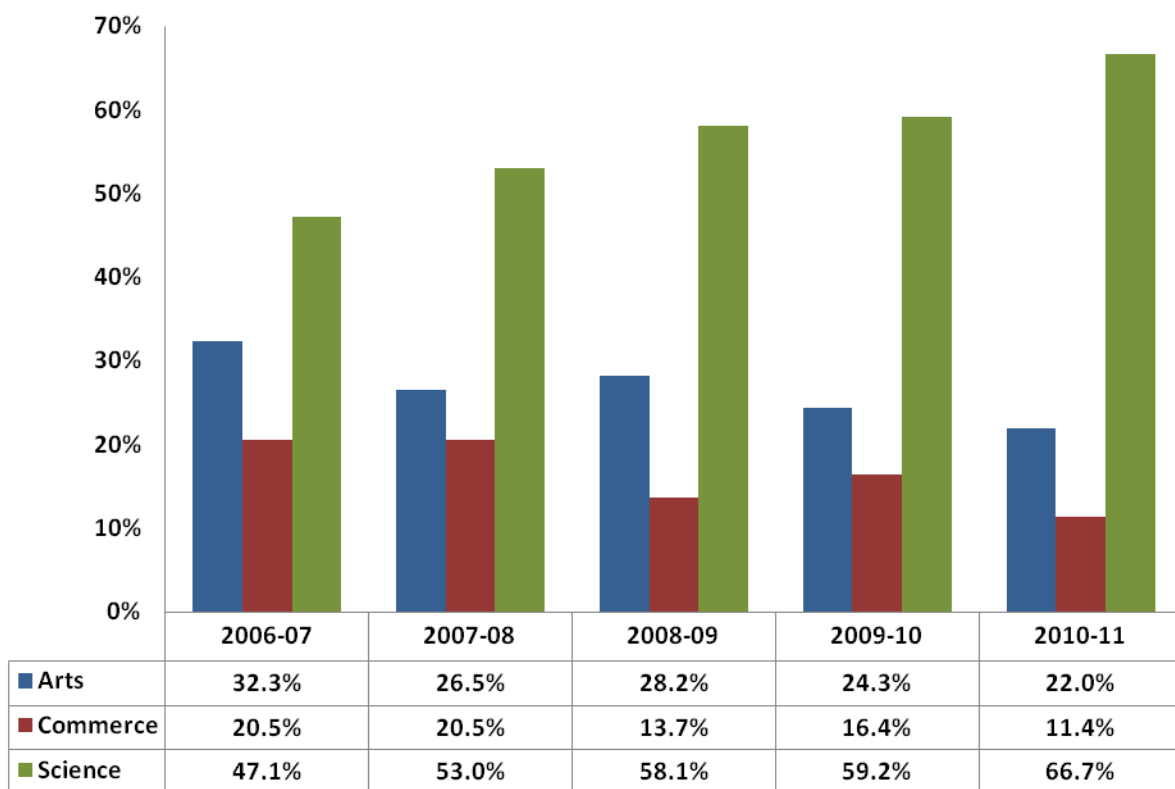
**Number of Research Grants and Contracts from External Sources**



The number of grants and contracts from external sources has increased significantly over the past ten years.

Information on our latest research projects may be found by accessing our [Faculty of Graduate Studies and Research \(FGSR\)](#) web site.

**Sponsored Research, Granting Councils and Contract Research  
Percentage of Grants by Faculty**



## Research Infrastructure

The Canadian Foundation for Innovation (CFI) was established in May 1997 by the Federal Government to support the efforts of post-secondary institutions to modernize their research infrastructure. The CFI operates on the principle that its investments are made in partnership with the private and voluntary sectors as well as with provincial governments and universities.

Since 2000-01, SMU has undertaken CFI projects totalling more than \$15 million, the largest being Saint Mary's participation in [Atlantic Computational Excellence Network \(ACEnet\)](#).

CFI Projects - Summary 2000-2011								
Faculty	Project Term	CFI	Matching Funding		Corporate	Corporate	SMU	Total
			ACOA	NSRIT	In-Kind	Contribution	Contribution	
Chemistry	2000-2004	521,107	521,107		172,206		159,745	1,374,165
Astron./Physics	2000-2002	185,790	112,139		115,158		54,406	467,493
Biology	2000-2004	90,035	90,035		56,370		30,204	266,644
Biology	2003-2007	138,992		138,992	46,983		46,817	371,784
Geography	2002-2007	185,551		128,476	484,776			798,803
CRC - Atl. Cdn Studies	2003-2005	73,478		73,478			2,978	149,934
CRC - Astron./Physics	2003-2005	65,995		65,995				131,990
CRC - Astron./Physics	2003-2005	84,000		84,000				168,000
Biology	2003-2006	116,142		116,136	48,154		19,492	299,924
Biology	2003-2008	94,146		89,646	17,603		34,076	235,471
Astron./Physics	2003-2006	21,759		26,530	7,902		5,016	61,207
CRC - Environmental Std	2006-2008	246,037		243,000	114,018		18,054	621,109
Astron./Physics	2005-2008	133,617		133,635	56,752		10,085	334,089
Biology	2006-2009	63,072		63,072	966		44,015	171,125
AceNet Project	2005-2010	2,775,229	357,603	2,244,112				5,376,944
CRC - Management	2005-2009	103,581		103,581	3,908		51,790	262,860
Math & Comp Science	2005-2010	57,840		57,840	14,470		19,105	149,255
CRC - Psychology	2006-2009	70,190		70,190			35,095	175,475
CRC - Astron./Physics	2007-2009	107,825		107,825	54,013		3,209	272,872
Geology	2007-2010	81,499		81,499	38,647		2,103	203,748
Library	2007-2010	118,461		118,461			59,230	296,152
Geography	2008 -2010	134,847		134,848	35,769		31,655	337,119
CRC Psychology	2009-2010	128,936		128,936			64,468	322,340
Chemistry	2009-2010	141,321		141,321	97,877		15,248	395,767
Institutional IOF Award	2009-2011	91,264						91,264
Astron./Physics	2010-2011	21,456		21,456			10,728	53,640
Biology	2010-2012	125,330		125,330	70,231		11,921	332,812
Astron./Physics	2010-2012	535,598		218,050	405,382	164,828	20,000	1,343,858
Chemistry	2011-2012	64,358		62,862				127,220
<b>Total</b>		<b>\$ 6,577,456</b>	<b>\$ 1,080,884</b>	<b>\$ 4,779,271</b>	<b>\$ 1,841,184</b>	<b>\$ 164,828</b>	<b>\$ 749,440</b>	<b>\$ 15,193,063</b>

## Indirect Costs

In its 2003 budget, the Government of Canada announced a new program to support the indirect costs associated with the conduct of academic research in institutions that receive research grants funds from any of the three federal granting agencies. The new program, which provided a \$1.3 million grant to SMU in 2010-11 has significantly alleviated the financial pressures related to the indirect costs and has helped to strengthen our research enterprise.